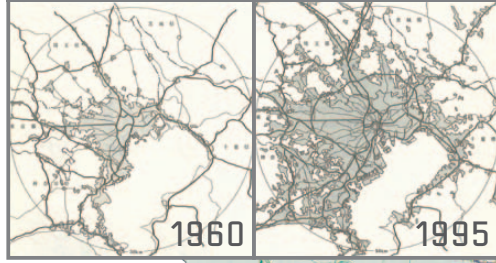


Tokyo was built up with the construction of railways*1.

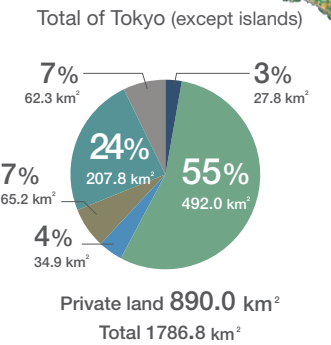
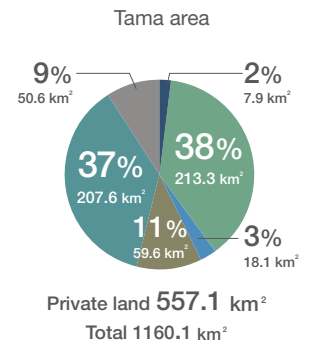
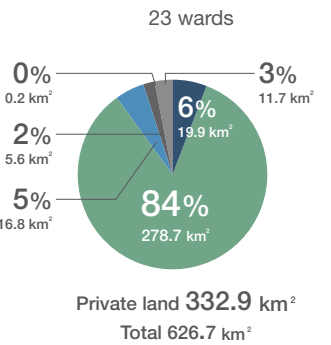
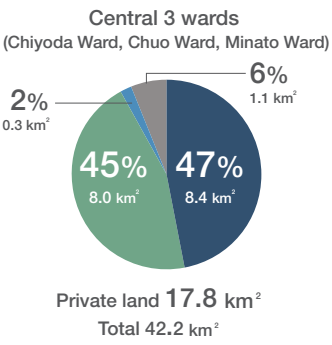


LAND USE

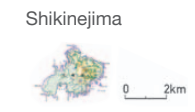
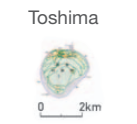
With only 0.6 percent of Japan's land mass, Tokyo supports the activities of 13 million people, approximately 10% of the total population. Land is used in many different ways here. Tokyo was built up with the development of railways.

The breakdown of private lands by use*

- Commercial area
- Residential area
- Industrial area
- Agricultural land
- Mountain forests
- Others



- Government facility
- Educational/cultural facility
- Social welfare/medical facility
- Public utility facility
- Office
- Non-residential commercial facility
- Mixed-use building (small business and residential)
- Hotel/leisure facility
- Sports/entertainment facility
- Detached housing
- Multi-dwelling unit
- Factory
- Factory with housing
- Warehouse/logistics facility
- Outdoor use land, temporary building
- Park, athletic field
- Unused land, etc.
- Agriculture, forestry and fisheries facility
- Paddy field
- Crop field
- Orchard, grove, plantation
- Pasture
- Water, river, canal
- Forest
- Rangeland



*Private land: Total area minus public land
Sources: *1 National Land Agency, "White Paper on the Tokyo Metropolitan Area 1999" (May 1999) *2 Bureau of Urban Development, Tokyo Metropolitan Government, "Tokyo Land 2014 (land-related data)" (October 2015)