

Tokyo Basics

Population

Total Population of Tokyo (2018)

13,831,421

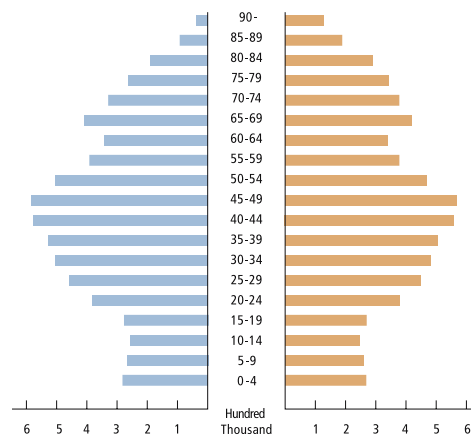
Population Age Structure by Gender (2018)

Men (2018)

6,807,675

Average Life Expectancy (2015)

81.07



Women (2018)

7,023,746

Average Life Expectancy (2015)

87.26

Foreign Residents (2018)

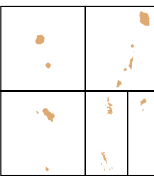
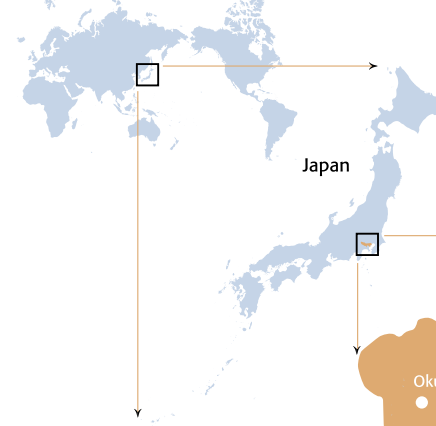
521,500

People Over 100 Years Old (2018)

5,803

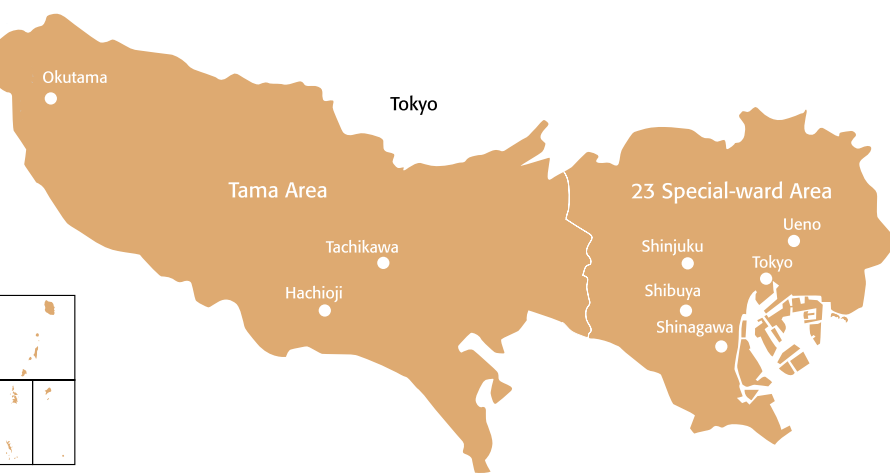
Location

World

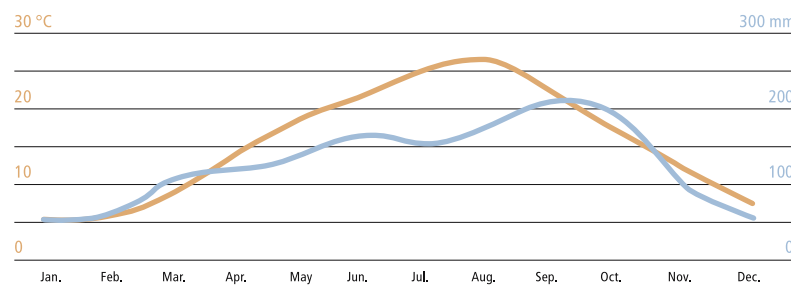


Area

2,193.96
sq. kilometers



Average Monthly Temperature and Rainfall

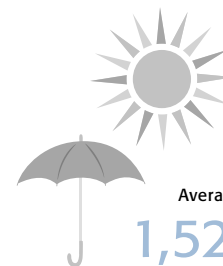


(Source: Japan Meteorological Agency, 1981-2010)

● = Average temperature
● = Average rainfall

Average Annual Temperature

15.4 °C
(59.7°F)



Average Annual Rainfall

1,528.8 mm

Sister and Friendship Cities / States *

- ① New York (USA)
- ② Beijing (China)
- ③ Paris (France)
- ④ New South Wales* (Australia)
- ⑤ Seoul (South Korea)
- ⑥ Jakarta (Indonesia)
- ⑦ São Paulo* (Brazil)
- ⑧ Cairo (Egypt)
- ⑨ Moscow (Russia)
- ⑩ Berlin (Germany)
- ⑪ Rome (Italy)
- ⑫ London (UK)



Annual Foreign Tourists (2017)



13.8
million

A 5.1% increase over 2016

Tokyo's GMP¹ (Nominal) as a Share of Japan's GDP (FY2015)

Japan ¥532.2 trillion



19.6% of
Japan's GDP

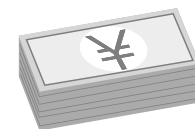
¥104.3
trillion²

¹ GMP: Gross Metropolitan Product

² \$868.6 billion

(2015 annual average conversion rate ¥1 = \$0.0083)

Tokyo's Budget (Initial FY2018)

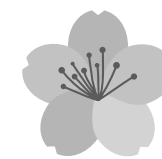


¥14,444
billion*

* \$130 billion

¥1 = \$0.0090 (Bloomberg, July 31, 2018)

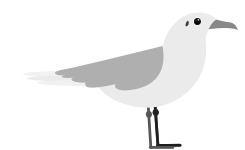
Symbols



The *Somei Yoshino* cherry tree was developed in the late Edo period to early Meiji era (late 1800s) by crossbreeding wild cherry trees. The light-pink blossoms in full bloom and the falling petals scattering in the wind are a magnificent sight to behold.



Ginkgo biloba is a deciduous tree with distinctive fan-shaped leaves that change from light green to bright yellow in autumn. The ginkgo tree is commonly found along Tokyo's streets and avenues and is highly resistant to pollution and fire.



The *yurikamome* gull has a vermilion bill and legs. It comes south to Tokyo in late October every year and sojourns in the surrounding ports and rivers until the following April. A favorite theme of poets and painters, it is also called *miyakodori* ("bird of the capital").