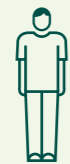


Population

Total Population of Tokyo (2017)
13,725,778

Men (2017)
6,763,220

Average Life Expectancy (2010)
79.82



Women (2017)
6,962,558

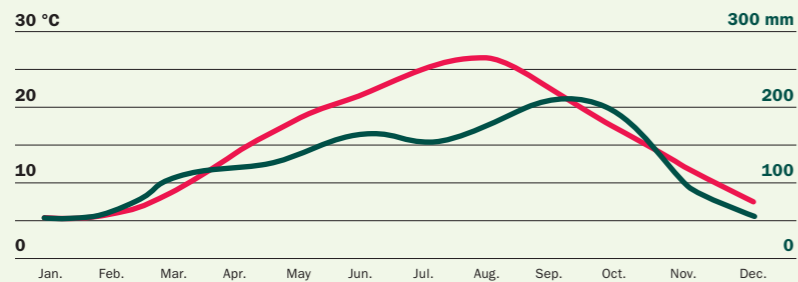
Average Life Expectancy (2010)
86.39



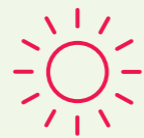
Foreign Residents (2017)
486,346

People over 100 Years Old (2017)
5,547

Average Monthly Temperature and Rainfall



(Source: Japan Meteorological Agency, 1981-2010) ● = Average temperature ● = Average rainfall



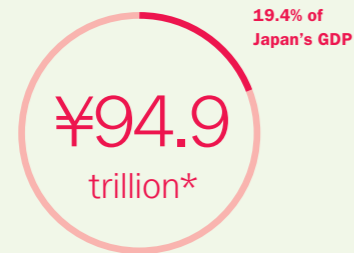
Average Annual Temperature
15.4°C (59.7°F)



Average Annual Rainfall
1,528.8 mm

Tokyo's GMP (Nominal) as a Share of Japan's GDP (FY2014)

Japan ¥489.6 trillion



*\$863.4 billion
(2014 annual average conversion rate ¥1 = \$0.0091)

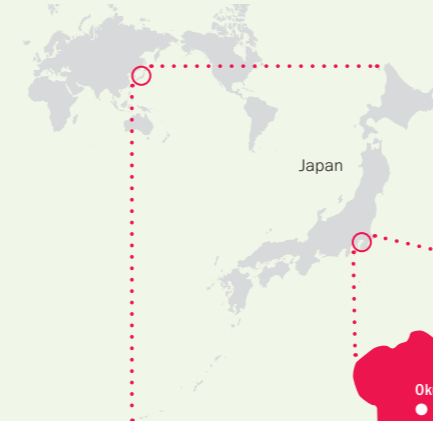
Tokyo's Budget (initial FY2017)

¥
13,054
billion yen*

*\$116 billion
¥1 = \$0.0089 (Bloomberg, June 30, 2017)

Location

World



Area

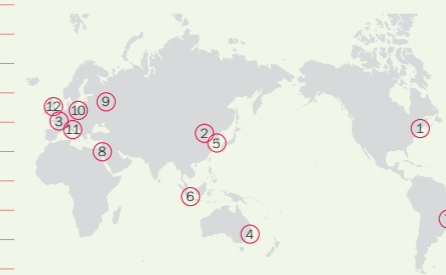
2,191.00
sq. kilometers



Islands

Sister and Friendship Cities / States

- 1 New York (USA)
- 2 Beijing (China)
- 3 Paris (France)
- 4 New South Wales (Australia)
- 5 Seoul (South Korea)
- 6 Jakarta (Indonesia)
- 7 São Paulo (Brazil)
- 8 Cairo (Egypt)
- 9 Moscow (Russia)
- 10 Berlin (Germany)
- 11 Rome (Italy)
- 12 London (UK)

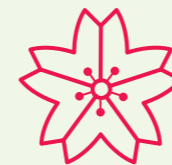


Annual Foreign Tourists (2016)

13.10
million

A 10.2% increase over 2015

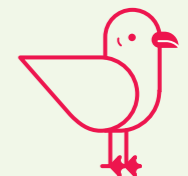
Symbols



The *Somei-Yoshino* cherry tree was developed in the late Edo Period to early Meiji Era (late 1800s) by crossbreeding wild cherry trees. The light-pink blossoms in full bloom and the falling petals scattering in the wind are a magnificent sight to behold.



Ginkgo biloba is a deciduous tree with distinctive fan-shaped leaves that change from light green to bright yellow in autumn. The ginkgo tree is commonly found along Tokyo's streets and avenues and is highly resistant to pollution and fire.



The *yurikamome* gull has a vermilion bill and legs. It comes south to Tokyo in late October every year and sojourns in the surrounding ports and rivers until the following April. A favorite theme of poets and painters, it is also called *miyakodori*, meaning "bird of the capital."