

Kamado Kunsei

Farm Cuisine Takamiya

☎ 042-734-3336

URL <http://takamiya.la.coocon.jp/>

Signature menu



- 📍 800-2 Nozuta-machi, Machida-shi
- 🕒 11:30 – 14:30 / 17:30 – 20:30
(Reservations required, evening service is Tuesday, Saturday and Sunday only)
- ✕ Wednesdays and Thursdays
- 🚗 From Tsurukawa Station in Machida, get off at Fukurobashi Bus Stop, walk 5 minutes



1 Soup 3 Sides (5 dishes total)
to 1 Soup 7 Sides (9 dishes total)

Available Year-round

Ingredients Wild and farmed vegetables used from Machida

(Cuisine example: Tempura with seasonal wild plants, miso-zuke marinade, boiled greens and dressing, shiraae white salad, etc.)

Children's Lunch Standard/
Special (for small children)

Available Year-round

Ingredients Wild and farmed vegetables used from Machida



Raimon Ramen

☎ 042-722-5567

URL



Signature menu



- 📍 973-16 Hommachida, Machida City
- 🕒 Weekdays 11:00 – 14:00
Weekends and Holidays 11:00 – 15:00
- ✕ Every Monday, second Tuesday of each month
- 🚗 Bus from JR Odakyu Line Machida Station, 2 min. walk after getting off at "Sugawara Jinjya Mae"



Ramen
(Soy sauce flavored or salt flavored broth)

Available Year-round

Ingredients Japanese leeks from Machida Broth also uses vegetables from Machida

Set with *Takikomi* Seasoned
Rice (limited quantities)

Available Year-round

Ingredients Seasonal vegetables from Machida (side dishes such as pickles or simmered food)



Musashido Ramen

Aihara Station

☎ 042-782-5390

URL <https://musashido.amebaownd.com/>



- 📍 1152-4 Aiharacho, Machida-shi
- 🕒 Tuesdays - Fridays 18:00 - 22:30
(22:00 last order)
- ✖ Mondays (closed for both Monday and Tuesday on the second Monday of the month)
- 🚶 Immediately next to JR Yokohama Line Aiharacho Station East Exit



Machida

Signature menu

Abura Soba Buckwheat Noodles

Available Year-round

Ingredients Eggs from Machida (Kato Farm)
used In addition, there is also a limited ramen with homemade yuzu citrus pepper using ingredients from Machida

Raw eggs for TKG (*Tamago-Kake-Gohan*, raw eggs over rice)

Available Year-round

Ingredients Eggs from Machida (Kato Farm)
used *Tamago-Kake* Soy Sauce from the local Okanaosaburo Shouten company in Machida



Van de Rhu

☎ 042-383-4908

URL



- 📍 103 City Life, 2-6-10 Honcho, Koganei City
- 🕒 12:00 - 14:00/18:00 - 22:00
- ✖ Tuesdays
- 🚶 Approx. 5 min. walk from JR Musashi-Koganei Station North Exit



Koganei

Signature menu

Simmered Soup of Edo Tokyo Vegetables

Available December-February

Ingredients *Magome Sanzang* Carrots,
used *Kameido Daikon* Radishes

Okura Daikon Radish Steak

Available December-February

Ingredients *Okura daikon* radishes
used



P Parking lot available

📄 Takeout menu available (may require a reservation)

📶 Wi-Fi available

📞 Reservations possible

💳 Credit cards accepted (confirm types that are accepted)

🏠 Electronic money accepted (confirm types that are accepted)

Kappo Take Bamboo

☎ 042-381-9213

URL



- 📍 5-6-16 Maeharachō, Koganei-shi
- 🕒 17:00-24:00 (Reservations required)
- ✖ Tuesdays
- 🚶 About a 15 min. walk from JR Musashi-Koganei Station

Signature menu



Terajima eggplant *Dengaku*

Available June-October

Ingredients Terajima eggplants from used Koganei

Sake-steamed fatty salmon and local vegetables

Available Year-round

Ingredients ingredients from Tokyo used



Sakanaya No Daidokoro

☎ 042-382-1455

URL



- 📍 2-6-10 Hon-cho, Koganei-shi
- 🕒 11:00 - 13:30
16:30 - 22:30 (Last call 21:45)
- 🚫 May be closed for lunch if wild fish is not delivered
- ✖ Sunday
- 🚶 3 min. walk from JR Chuo Line Musashi-Koganei Station North Exit

Signature menu



Sashimi Assorted

Available Irregular

Ingredients Fish from Miyake Island (horse mackerel, mackerel)

Ashitaba with Sesame Sauce

Available Irregular

Ingredients *Ashitaba* from the Izu Islands used



Cafe 5884

☎ 042-387-1004

URL <http://cafe5884.com>



- 📍 1-11-21 Sakuracho, Koganei-shi
- 🕒 11:00 – 17:00 (Last Call 17:30)
- ✖ Irregular
- 🕒 20 min. walk from JR Chuo Line Musashi-Koganei Station
1 min. walk from Kanto Bus "Edo Tokyo Tatemonoen Mae" Bus Stop
7 min. walk from Seibu Bus "Koganei Bashi" Bus Stop

Signature menu



Today's 5884 Plate

Available	Year-round
Ingredients used	Frequently uses vegetables from the "Koganei Edo Farmhouse street" direct sales location Also uses Edo Tokyo vegetables when they are received.



Cafe Mother's Kitchen

☎ Please check Facebook for operating information.

URL <https://www.facebook.com/pages/category/Grocery-Store/Cafe-Mothers-Kitchen-215678762297896/>



- 📍 5-16-23 Nukuiminamicho, Koganei City
- 🕒 10:30 – 15:30
- ✖ Sundays
- 🕒 From JR Kokubunji Station by the "Bun Bus." 3 min. from the "Shinmachi Sanhome" bus stop.

Signature menu



Three Kinds of Main Dish Lunch (Comes with side dish of four kinds of vegetables, a vegetable salad, *miso* soup with plenty of vegetables, and a small platter of vegetables)

Available Year-round

Ingredients used Seasonal fruits and vegetables from Tachikawa, Koganei, and Kokubunji Edo Tokyo vegetables

Three Kinds of Quiche Lunch Plate (Comes with a vegetable salad and Western-style *koji* soup with plenty of vegetables)

Available Year-round

Ingredients used Seasonal fruits and vegetables from Tachikawa, Koganei, and Kokubunji Edo Tokyo vegetables



Kiraku Zushi

☎ 042-341-6781

URL <http://www.kiraku.ne.jp/>



- 📍 1-8-4 Gakuen-Higashi-cho, Kodaira-shi
- 🕒 11:30 - 14:30/16:30 - 23:00
- ✕ Wednesdays
- 🚶 2 min. walk from Seibu Tamako Line Hitotsubashi-Gakuen Station North Exit



Signature menu

Original Kodaira Roll

Available Year-round

Ingredients used Blueberries (Kodaira)

Goseki Late Ripened Marbled Thick Omelettee

Available November to April

Ingredients used Goseki Late Ripened Japanese mustard spinach (Kodaira)



Cafe Laguras

☎ 042-344-7199

URL <https://www.cafelaguras.jp/>



- 📍 1F Van Vere, 1-24-14 Misonocho, Kodaira-shi
- 🕒 10:30 - 16:00
- ✕ Wednesdays and Thursdays
- 🚶 3-4 min. walk from Seibu Shinjuku Line Kodaira Station South Exit (Before Ajisai Park)



Signature menu

Blueberry Chifon Cake

Available August 1st to 31st

Ingredients used Raw blueberries from Kodaira (Kodaira Blueberry Council designated farm)

Yuzu Citrus Cake

Available Year-round

Ingredients used Yuzu citrus from Kodaira (Uchibori Farm)



Japanese Cooking Onoya

☎ **042-341-1248**

🌐 <http://www.onoyakodaira.com>



- 📍 2-1330-17 Ogawa-cho, Kodaira-shi
- 🕒 11:30 – 14:00/16:30 – 21:00 (Last call 21:00)
- 🗑 Mondays
- 🚶 Walk 3 min. towards Hitotsubashi Gakuen from Seibu Tamako Line Ome-Kaido Station



Signature menu

Kodaira Vegetables Bento

Available Year-round
 Ingredients All ingredients grown in used Kodaira

Kodaira Pizza

Available Year-round
 Ingredients Corn, kidney beans, tomatoes, basil, eggplant, onions (from Kodaira)



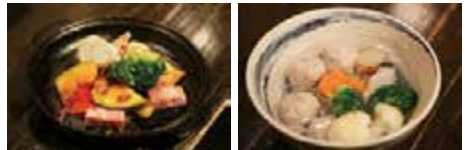
My Space O-Ban

☎ **042-342-5550**

🌐 <http://www.o-ban.jp/>



- 📍 2-14-20-102 Gakuen-Nishimachi, Kodaira-shi
- 🕒 17:00 – 24:00
- 🗑 Sundays
- 🚶 1 min. walk from Seibu Tamako Line Hitotsubashi Gakuen Station



Signature menu

Kodaira Rhapsody

Available Year-round
 Ingredients a grill using five to seven types of seasonal Kodaira vegetables used

A soup with minced fish balls made of local fish and with plenty of Kodaira vegetables

Available Year-round
 Ingredients A soup with minced fish balls prepared with root vegetables harvested in Kodaira used



Kakyoan

Handmade *Soba* and *Sake*



Signature menu

☎ 042-347-0655

URL <http://bishu-kakyou.com/>

- 📍 2-1362 Ogawacho, Kodaira-shi
- 🕒 11:30 – 14:00/17:30 – 22:00 (LO 21:00)
- ✕ Mondays and the third Tuesday of the month (the following day in the case of a holiday)
- 🚆 3 min. walk from Seibu Tamako Line Omekaido Station



Seasonal *Soba* Noodles (mainly with Kodaira vegetables)

Available Year-round

Ingredients Vegetables from Kodaira, used *soba* noodles

Snack of Kodaira Vegetables

Available Year-round

Ingredients Vegetables from Kodaira used



Handmade *Udon* Noodles Dontaku



Signature menu

☎ 042-585-2222

URL

- 📍 1352-6 Hino, Hino-shi
- 🕒 11:00 – 21:00 (Closed from 14:30 – 17:30)
- ✕ Tuesdays and Wednesdays
- 🚆 3 min. walk from Tama Toshi Monorail Line Koshu-Kaido Station



Tenzaru *Udon* Noodles

Available Year-round

Ingredients Chrysanthemums, *shiitake* mushrooms, *shishito* peppers, eggplant, and potato, etc. from Hino

Salad *Udon*

Available May-September

Ingredients Cabbages, tomatoes, cucumber, etc. (from Hino)





- 📍 2F Kamino Bldg., 5-12-3 Hirayama, Hino-shi
- 🕒 11:30-14:00 (Last call)
17:30-20:00 (Last call)
- ✖ Mondays (other irregular holidays)
- 🚶 5 min. walk from Keio Line Hirayamajoshi-koen Station



Signature menu



Lunch Course

Available Year-round

Seasonal vegetables from Hino-shi and Hirayama

Ingredients used
(Example: Soup is either a Western-style pork broth soup with plentiful seasonal vegetables, or a potage, or a cold soup in the summer)

Dinner Course

Available Year-round

Seasonal vegetables from Hino-shi and Hirayama

Ingredients used
(Example: Salads and the garnish for the main course, etc. also use local seasonal vegetables)



Artigiano Gelateria



- 📍 329 Mogusa Hino-shi
- 🕒 11:00 - 17:00
- ✖ Wednesdays and Thursdays
- 🚶 7 min. from Keio Line Mogusaen Station



Signature menu



Freshly squeezed milk (gelato)

Available Year-round

Ingredients used
Homemade milk used (Mogusa Farm)

Seasonal Fruit Gelato

Available Year-round

Ingredients used
Homemade milk (Mogusa Farm)
Seasonal fruits and vegetables from Hino (blueberries, strawberries, tomatoes, etc.)



Cafe Hana

☎ 042-599-5039

URL <https://cafehana39.com>



Signature menu

- 📍 Kerson 101 1-19-7 Misawa, Hino-shi
- 🕒 11:00-20:00 (Thursdays 11:00 - 16:00)
- ✕ Mondays, Tuesdays, and the third Sunday of the month
- 🚶 10 min. walk from Keio Line Takahatafudō Station
7 min. walk from Tama Toshi Monorail Takahatafudō Station



Weekly lunch course

Available Year-round

Ingredients Seasonal vegetables from used Hino

This week's lunch set

Available Year-round

Ingredients Seasonal vegetables from used Hino



kitchen KEIJI

☎ 042-395-3325

URL <http://www.hotpepper.jp/strJ000750035/>



Signature menu

- 📍 1F Takeda Bldg., 2-31-1 Sakaecho, Higashimurayama-shi
- 🕒 11:00 - 15:00/17:00 - 22:30
- ✕ Mondays
- 🚶 1 min. walk from Seibu Shinjuku Line Kumegawa Station South Exit



DON Burg

Available Year-round

Ingredients Used for vegetable garnishes (tomatoes, sunny lettuce, etc.)

Bagna càuda

Available Year-round

Ingredients Tomatoes, cucumbers, daikon radish, etc. from Higashimurayama

