

Digital Signage Features

- User-friendly with multiple functions
- When not manually operated, it serves as an information board. When users touch the screen, more detailed information and features are offered.

Directions displayed on touch panel screen



Users can use content even when standing away from the digital signage unit



Free Wi-Fi service provided



Information in times of disaster

Digital signage allows video transmissions and promotes Tokyo's charms by sending welcome messages and other videos to travelers.

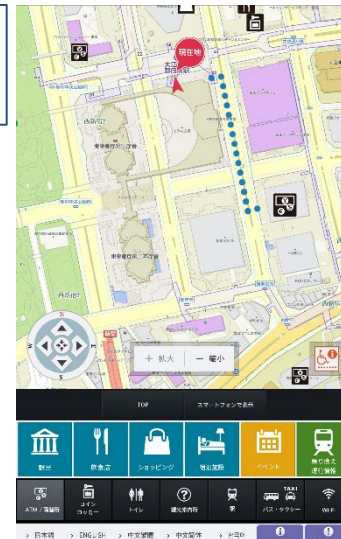


Digital signage display screen examples



The top screen is a map centering on the digital signage location showing information and directions to nearby facilities.

Users can perform quick searches for facilities including ATMs, coin lockers, restrooms, bus stops and train stations.



Recommended routes, including barrier-free ones, are displayed.



Event information from Tokyo's official tourism site: GO TOKYO



Users can search for information on various types of eateries that have menus in English, provided through EAT TOKYO (<http://www.menu-tokyo.jp/>).



Timely information on train operations and train transfers

Content provided by digital signage

Search for locations	Sightseeing	Nearby sightseeing spots
	Eateries	Search for information on various types of eateries that have menus in foreign languages, provided through EAT TOKYO (http://www.menu-tokyo.jp/)
	Shopping	Location of nearby department and duty-free stores
	Accommodations	Information on nearby hotels and <i>ryokans</i>
Search for events (train transfers and operation information)	Events	Search for “This month’s events” or “All events” happening nearby
	Train transfers/operations	Information on train transfers and train operations
Quick search	Location of ATMs and currency exchange	Locations of ATMs that take international cash cards and foreign currency exchange locations
	Coin lockers	Location of coin lockers
	Restrooms	Restroom locations, along with displays of whether ostomy/wheelchair support or changing tables, etc. for small children are available
	Sightseeing guidance	Locations where multi-lingual sightseeing guidance is provided
	Train and subway stations	Nearby stations
	Buses and taxis	Local bus and highway bus stops and taxi stands
	Wi-Fi	Free Wi-Fi spots
Useful information	Smoking areas	Warnings on smoking on the streets in Tokyo and locations of nearby smoking areas
	Using the Wi-Fi service	How to use the free Wi-Fi service
When help is needed	Lost items	Where to make inquiries if an item has been left at a train station/on the train, on a Toei subway/bus, in a taxi, at the airport, accidentally dropped on the street or unknown where the item was lost
	Illnesses and injuries	Minor illnesses and injuries, illnesses and injuries requiring urgent care, traffic accidents, location of AED devices, and others
	Fires and earthquakes	Initial response if a fire or earthquake occurs