

Appendix

— Enchanting Tokyo AOGASHIMA Island



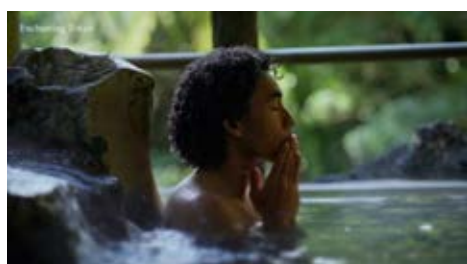
<https://tokyodouga.jp/ahxan8yxxo.html>

Aogashima, located 358 kilometers (222 miles) south of urban Tokyo in the Pacific Ocean, was the only Japanese location selected as the “World’s Top 13 Most Beautiful Views to See Before you Die” by a US-based NGO, thereby attracting attention from around the world. The video “Enchanting Tokyo AOGASHIMA Island” introduces the unique landscape of the island, including the world-famous double caldera and geothermic “*hingya*” steam eruptions. The video also explores the island’s way of life and beliefs that coexist in harmony with nature.

Access

- Airplane (Haneda Airport-*Hachijojima* Airport) 3 flights/day [approximately 55 minutes, one way]
- Helicopter (*Hachijojima* Airport-*Aogashima* Heliport): 1 flight/day [20 minutes, one way]
- Boat (*Hachijojima*, *Sokodo* or *Yaene* Port-*Aogashima*, *Sanpo* Port): 4-5 trips weekly [2 hours and 30 minutes, one way]

— Enchanting Tokyo HACHIJOJIMA Island



<https://tokyodouga.jp/hdw2aa-tizc.html>

Hachijojima, which is less than an hour’s flight from Tokyo, is an island where you can enjoy the great outdoors. With one of the highest precipitation rates in Japan, *Hachijojima* has its own unique environment including giant ferns and potholes carved into the rock by ever-flowing spring water. On the island, you can enjoy hiking as well as running and fishing. After enjoying physical activities, visitors can relax in a natural hot spring surrounded by rich nature, making it the perfect environment for a refreshing weekend getaway.

Access

- Airplane (Haneda Airport-*Hachijojima* Airport) 3 flights/day [approximately 55 minutes, one way]
- Boat (*Takeshiba* Pier, Tokyo- *Hachijojima*, *Sokodo* or *Yaene* Port): Runs daily [10 hours and 20 minutes, one way]