

International Conference on Open Access to Culture 2024

1 – Conference

(Invited Talk/ Keynote Speech, Sessions, Case Studies, Breakout Sessions)

Dates: Nov. 1 (Fri) – Nov. 3 (Sun)

★ **Pre-registration required**

Venue: Tokyo International Forum

Invited Talk / Keynote Speech, Sessions, Case Studies: Hall B5

Breakout Sessions: Meeting Rooms G502 / G510

Over the three days, there will be invited talk, keynote speech, 4 sessions, 2 case study presentations, and 8 breakout sessions. Following the theme of “Culture and Place,” the conference will provide an opportunity for a diverse range of experts and practitioners from Japan and abroad to learn from each other by sharing and actively discussing case studies and practices.

○ **Invited Talk: Clin d'Oeil: International Festival of Arts in Sign Language**

Nov. 1 (Fri) 1:00pm – 2:00pm

David de Keyzer – Director of CinéSourds & Artistic Director of Festival Clin d'Oeil

An invited talk from the director of Clin d'Oeil, a French festival that attracts deaf performers and audiences from around the world



○ **Keynote Speech: Creating Spaces for Being Together**

Nov. 1 (Fri) 2:15pm – 3:15pm

Shinji Kajitani – Professor, Graduate School of Arts and Sciences, University of Tokyo

A keynote speech from a researcher and practitioner of symbiosis who is engaged in creating “places to think together” within the educational system and local communities



○ **Sessions** Conversations with key persons in various fields in Japan and abroad to deepen understanding

① **Working People and Arts for Well-being** Nov. 1 (Fri) 3:30pm – 5:30pm

While learning about the activities and research in Australia, where multiculturalism is historically rooted in society, we will deepen the discussion on what role arts and culture should play in promoting well-being and consider how individuals, businesses, and organizations can take action through art.



Yoshie Kurisu

Para Creative Producer/Director



Maholo Uchida

Project Director, Center for Cultural Innovations
at TAKANAWA GATEWAY CITY, East Japan Railway Company



Georgie McClean

Executive Director, Development and
Partnerships at Creative Australia



Tomoharu Matsuda

Planner, Poet

② Life, Art and Education Nov. 2 (Sat) 10:00am – 12:00 noon

Initiatives by the art sector, such as art universities and museums, to co-create in the community through welfare, medicine, and technology, etc., may bring us closer to realizing a symbiotic society. To create such opportunities for co-creation, this talk will explore the future roles and activities required of arts and culture.



Katsuhiko Hibino

President, Tokyo University of the Arts



Lisa Phillips

Toby Devan Lewis Director of the New Museum

©Christine Rivera



Kazuyo Sejima

Director, Tokyo Metropolitan Teien Art Museum

©Kohei Omachi

③ Social Participation of Cultural Organizations Nov. 2 (Sat) 3:30pm – 5:30pm

How should Tokyo's cultural institutions tackle the challenges of multiculturalism? Guests with experience in metropolitan museums and art festivals will discuss what actions Tokyo should take in the future.



Mami Kataoka

Director, Mori Art Museum

撮影：伊藤彰記

©Ito Akinori



June Yap

Director, Curatorial & Research Singapore Art Museum



Cosmin Costinas

Senior Curator of Exhibition Practices, HKW Berlin

④ Finding Understanding in Not Understanding Nov. 3 (Sun) 10:00am – 12:00 noon

How do we overcome the barriers standing in the way of empathy? Speakers from diverse fields will share their personal experiences and engage in dialogue to discuss how empathy can be achieved. They will also discuss how art can contribute to communication between people.



Kiyoe Shimura

Birth Therapist; President, Dialogue Japan Society



Andreas Heinecke

Founder, Dialogue Social Enterprise



Mandy Harvey

Singer / Songwriter

※Closing Session also to be held

Based on the four sessions, this discussion will focus on the next vision needed to create places where people feel at home (place to belong).

Speakers: Shinji Kajitani (Professor, Graduate School of Arts and Sciences, University of Tokyo), David de Keyzer (Director of CinéSourds & Artistic Director of Festival Clin d'Oeil), Morwenna Collett (Consultant / Director), Sumiko Kumakura, (Dean, Professor, Graduate School of Global Arts, Tokyo University of the Arts)

○ Case Studies Presenting notable case studies on accessibility

Experts and practitioners, including overseas guests, in the field of cultural facilities will give presentations. Sharing practical examples from Japan and abroad, we will explore the possibilities for future development together.

① Both Sides, Now: a good place to live is a good place to prepare for dignified dying

Speaker: Kok Heng Leun (Director, Founder of Drama box)

Exploring ONGAKU –Music for the Deaf

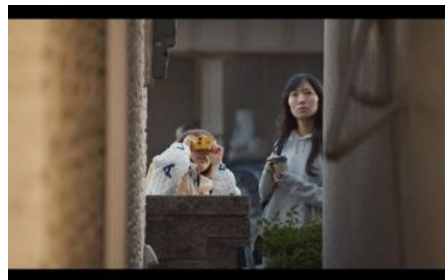
Speaker: Eri Makihara (President, Japan Deaf Arts Association;
Filmmaker, Artist)

The Architect Creating Spaces to Feel at Home

Speaker: Chie Konno (Architect)

② The Methodology of KINO Meeting

Speaker: Kota Abe (Designer, The major of the Cultural Anthropology)
Ushin Tei (Translator / filmmaker)



Case Study④ film screening:
“New Tokyo Tour” (2022)

○ Breakout Sessions Introducing practices related to “Culture and Place” and co-thinking wellbeing

① Connecting Multicultural Societies through Theater

Speakers: Sumiko Tamuro (Tokyo Metropolitan Theatre), Beata Anna Schmutz (Mannheim National Theatre)
Moderator: Min Jinkyung (Associate Professor, Arts and Culture Policy, Hokkaido University of Education
Iwamizawa Campus)

② Designing Support for Expanded Theater Experiences and Participation

Speakers: Tomoko Tsukihashi (Tokyo Bunka Kaikan), Sachiko Ukegawa (Saitama Arts Theater)
Moderator: Yoshiki Nakamura (Tokyo Bunka Kaikan)

③ Improving Accessibility and the Future of Cultural Facilities

Speakers: Yuriko Komai (Arts Council Tokyo)
Chika Sekine (CEO & Senior Fellow, UDIT Inc.)
Kodai Sano (National Museum of Emerging Science and Innovation)

④ Art Addressing Dementia

Speakers: Hayato Fujioka (Tokyo Metropolitan Art Museum),
Ken Saeki (Horai Community Comprehensive Support Center),
Liu Chien-Liang (Taipei City Hospital)
Moderator: Kazumi Kumagai (Tokyo Metropolitan Art Museum)

⑤ How to Create Inclusive Spaces

Speakers: Hajime Kato (Photographer; Owner of Studio oowa)
Mami Odai (Director, Sapporo Tenjinyama Art Studio AIR)

⑥ What It Takes to Create an Inclusive Theater

Speakers: Yuichiro Nagatsu (Associate Professor, Graduate School of Design,
Kyushu University), Toru Hirai (KAAT Kanagawa Arts Theatre)

⑦ Sign Language Interpretation of Art by Deaf People: Learning from the British BSL Guide

Speakers: Natsumi Kanno (Artist, Researcher, Director of Re; Signing Project)
Chisato Minamimura (Performance Artist, BSL Art Guide)

⑧ Accessibility without limits; Case studies from the Rijksmuseum Amsterdam

Speakers: Maiko Sato (Art/Museum Educator)
Cathelijne Denekamp (Rijksmuseum Amsterdam)
Moderator: Kasumi Yamaki (Museum of Contemporary Art Tokyo)



Session ④ Japanese edition of the National
Taiwan Museum’s “Museum Prescription: A
Practical Guidebook”.
Published by Tokyo Metropolitan Art Museum



Session ⑥ Toyohashi Arts Theatre
“PLAT Theater Tour for the visually
and hearing impaired”

Dates: Oct. 29 (Tue) – Nov. 3 (Sun)

Venue: Tokyo International Forum B1F Lobby Gallery

Visitors will be able to **see, experience, and test drive the latest accessibility-assistive devices**. **Touchable artworks** by a variety of artists will also be on display.

Other events include a **rakugo storytelling** performance by Shokichi Shunputei, a rakugo storyteller who has worked with the visually impaired, an exhibition of photographs documenting new accessibility initiatives at cultural facilities in Tokyo, and a documentary film exploring “home” for people who have roots overseas and live socially in Japan.

Experience the latest devices

Exhibitions of touchable art



FILLTUNE
「FILLTUNE CLEAR」



QD Laser
Retissa On Hand



2022 International Conference

"Poems of Likes and Dislikes Workshop"

Artist **Suzuki Yasuhiro** questions how we see the world through his works that offer fresh perspectives on familiar everyday phenomena, and will be exhibiting works that express the artist's own "place in the world," including his representative work “Blinking Leaves”.

Workshops will also be held to provide an opportunity for participants to think about "culture and place."



Photo: **Timothée Lambrecq**



Blinking Leaves, 2003
Courtesy of SPIRAL/Wacoal Art Center
Photo: **Katsuhiro Ichikawa**

3 – Networking

A **networking salon** will be set up where speakers will gather after their presentations to connect and exchange knowledge with participants, companies, organizations, creators, and others.

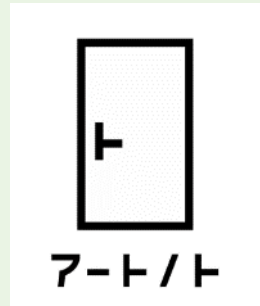
Dates: Nov. 1 (Fri) – Nov. 3 (Sun)

Venue: Tokyo International Forum 5F Hall B5 Lobby

Tokyo Support Center for the Arts and Culture ARTNOTO, which supports the sustainable activities of artists and those involved in art and culture, will open a consultation corner.

Dates: Oct. 29 (Tue) – Nov. 3 (Sun)

Venue: Tokyo International Forum B1F Lobby Gallery



4 – Communication Lab

★Some programs require pre-registration

Dates: Oct. 29 (Tue) – Nov. 3 (Sun)

Venue: Tokyo International Forum B1F Lobby Gallery

Workshops and other events will be held for participants to consider and experience ways of communicating together.

• My World, Your World

Workshops using a variety of communication kits to communicate through touch and other senses.

Supervisor : Natsumi Wada (Interpreter/ Researcher)



Workshop with Natsumi Wada

• What Does "Touching" Mean?

Using educational materials for blind children, the course will experience how children with visual impairments perceive and recognize space with senses other than sight.

Supervisor: Kazuji Mogi (Professor, Atomi University), Susumu Ouchi (Visiting Researcher, Seibi Gakuen College)

In addition, there will be a riddle-solving game in which hearing people and deaf or hard-of-hearing people participate together to find solutions, a workshop on "Plain Japanese," and an introduction corner for the Deaflympics.

	Lobby Gallery	Hall B5	Meeting Room G502	Meeting Room G510
Oct. 29 (Tue)	Showcase Networking Communication Lab			
Oct. 30 (Wed)				
Oct. 31 (Thu)				
Nov. 1 (Fri)		Opening ceremony & performance Invited Talk / Keynote Speech Session 1		
Nov. 2 (Sat)		Session 2,3 Case Study 1	Breakout Sessions 1, 2	Breakout Sessions 5, 6
Nov. 3 (Sun)		Session 4 Case Study 2 Closing Session	Breakout Sessions 3, 4	Breakout Sessions 7, 8